

MTL4

Cologix's North Montréal Data Centre

Quick Facts:

- 12K SQF customizable space
- Dark fibre ring to primary carrier hotel with access to 100+ unique networks
- Connectivity to Montréal Internet Exchange (QIX) at MTL3
- Eco-friendly, green renewable energy
- Layered redundancy on all critical equipment, including 2N UPS & generators
- Upgraded with hot aisle containment systems

30+ Network Neutral Data Centres Throughout North America

U.S.:

Ashburn • Columbus • Dallas
• Jacksonville • Lakeland •
Minneapolis • New Jersey

CAN:

Montreal • Toronto • Vancouver

Tour the MTL4 Data Centre:

7171 Jean-Talon East,
Montréal, Québec

To schedule, contact:

Sales@cologix.com or
+1.855.497.2537

Top Connectivity at Enterprise-Grade Facility

Cologix's enterprise-grade facility at 7171 Jean Talon East is a hardened data centre for enterprise applications. The facility offers geographic redundancy to downtown, higher power densities, exceptional security, upgraded infrastructure, and enhanced redundancy. MTL4 has an onsite Meet-Me-Room (MMR) and robust connectivity via high-count, diverse fibre and direct access to the MMR in Montreal at Cologix's MTL3 facility at 1250 Rene-Levesque West. With 10 data centres throughout the city, Cologix offers low latency, direct onramp connections to hyperscale cloud providers, including Amazon Web Services®, Google Cloud Platform, Oracle FastConnect, Microsoft® Azure and IBM Cloud.

Relentless Infrastructure

MTL4 offers superior redundancy with three generators and upgraded uninterruptible power systems. The chiller plant was recently upsized as well, with in-row cooling options available for high-density applications. The facility offers dynamic cooling and rapid power deployments for efficient scalability.

Certified & Secure

The data centre technical floor is supported 24/7 by on-site technicians, keycard access, and a closed-circuit TV (CCTV) system. MTL4 also supports PCI compliance on an individual basis, as well as customized security for dedicated space.

Why Cologix in Montreal?

As the market leader in Montréal, Cologix offers the most robust, flexible infrastructure and secure, scalable, low-latency connectivity at the digital edge. We operate the largest MMR with access to 100+ carriers from our MTL3 data centre and access to hyperscalers. Customers value the richness of connectivity options along with reliability, upgrades, redundancies and ease of doing business with Cologix.



MTL4 MONTREAL DATA CENTRE

Site Specifications

MTL4: 7171 Jean-Talon East

Site Information

MTL4 Space:	12K SQF
Total Montreal Space:	790K SQF
Building:	1985, renovated 1999, 2006, 2013-14; concrete, glass, steel; seismic 2A
Floors:	Anti-static raised floors
Space Configuration:	Custom cabinets, pods & cages
Elevator:	Loading doc access with 5K lbs capacity

Security

Closed-Circuit TV:	Yes
Security:	24/7 onsite guards
Customized Security:	Yes, for dedicated pods, cages or rooms
Access:	Keycard
Man Traps:	Yes

Environmental Controls

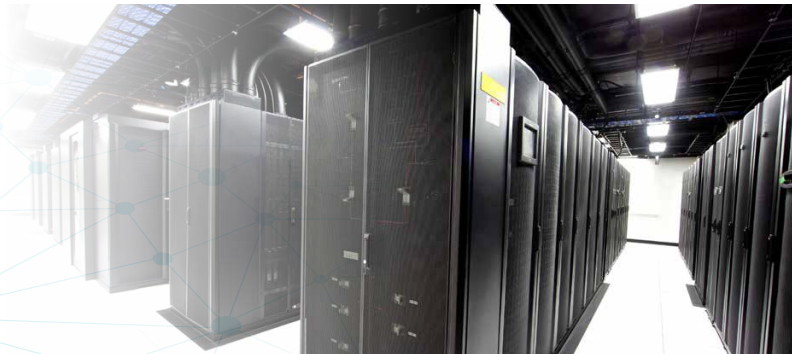
Cooling Capacity:	280 tons, N+1
Cooling Type:	Chilled water
Fire Protection:	Cross-zoned
Fire Suppression:	Pre-action dry pipes
Humidification:	Yes
Remotely Monitored:	Yes

Power

Energy:	Renewable, green hydroelectric power
Entrance:	1 power entrance
UPS:	Toshiba units (N, A+B, 2N), 2 x 500 kVA + 2 x 300 kVA
Load Design:	150 watts/SQF
Configurations:	Primary N+1 & 2N generator configuration
ATS:	Yes, diverse
Battery:	VRLA Battery with multiple backup generators

Connectivity

Meet-Me-Room (MMR):	Yes, Cologix controlled
Number of Networks:	100+ network options
Network Neutral:	Yes
Fibre Entrance:	Diverse paths of building fibre entrance
Cross Connects:	Copper, fibre, virtual
Internet Exchange:	Yes, primary node in Montreal Internet Exchange (QIX) access via lit services at MTL3
Metro Connect:	Passive waves & lit connections
Communications:	Diverse dark fibre between 10 Cologix facilities and carrier hotels



Customer Support

24/7 remote hands support.
P: +1.855.4IX.HELP (+1.855.449.4357)
E: support@cologix.com

WWW.COLOGIX.COM
B20V8-MTL4